

JAMHUURIYADDA DIMOQRAADIGA SOOMAALIYA
WASAARADDA HAWLAHA GUUD
WAAXDA SAHANKA IYO DEGANKA MAGAALEYNTA



SIIN DHUL

iyadoo la arkay ogolaansihii Guddiga Dhismaha
ee Dawladda Hoose ee Xarar Fadhigii Gaad Taar. 30/6/83.-

markay taariikhdu ahayd 2/6/83.- BI. 170.-

kuna saabsanayd naqshadii dhismada oo u keensaday Jaalle
XXXXXXXXXXXX KAAJI YUSUF CISVAAN CULUSOW.-

kaasoo horay u soo weydiistay gabal dhul dhismood ah oo ku
yaal ragaaladatan Vuqdisho Degrada Kaaraan.

iyadoo la arkay warqadii tiradeedu ahayd DH/VG/DH/R/ 464/83.-

oo waaxda dhismaha iyo dhulka taariikhduna ahayd 31/7/83.

, laguna amraayey xafiiska farsamada dhulka
inuu wareejiyo dhulka ujeeddada ku qoran

Sanadii Kun Sanaalborow side ee bishii 1983.-

maalintii 29/7/83 ee bishii Luulyo 1983.-

Jaalle Sahriye Abukar Waxared Sheikh.-

ee ka tirsan Xafiiska Farsamada Dhulka u amarayna
maamulaha Waaxda

JAMHUURIYADDA DIMOQRAADIGA SOOMAALIYA
WASAARADDA HAWLAHA GUUD
WAAXDA SAHANKA IYO DEGANKA MAGAALEYNTA



SIIN DHUL

iyadoo la arkay ogolaansihii Guddiga Dhismaha
ee Dawladda Hoose ee Xarar Fadhigii Saad Taar. 30/6/83.

markay taariikhdu ahayd 2/6/83. BL. 170.

kuna saabsanayd naqshadii dhismada oo u keensaday Jaalle
~~XXXXXXXXXXXX~~ XAAJI YUSUF CISAAN CULUSOW.

kaasoo horay u soo weydiistay gabal dhul dhismood ah oo ku
yaal magaaladatan Nuqdisho Degrada Kaaraan.

iyadoo la arkay warqadii tiradeedu ahayd DH/NG/DH/R/ 464/83.

oo waaxda dhismaha iyo dhulka taariikhdu ahayd 31/7/83.
iguna amrayey xafiiska farsamada dhulka
inuu wareejiyo dhulka ujeeddada ku qoran

Sanadii san Sagaalboqolside etaniyosedex.

maali 29/7/83 ee bishii Luulyoo 1983.

Jaa Sahriye Abukar Waxared Sheekh.

ka tirsan Xafiiska Farsamada Dhulka u amarayna
aamulaha Waaxda

wuxuu tegey meeshi dhulka ku yiil, sidey caadadu ahaydna isagoo jooga qofkii la siinayey dhulkaas waxaa la tusay geesihii tasoo wafaqsan qorshaha magaalada :

waxayna u egtahay sida soo socota:

Waa Gabal dhul oo ku yaal magaaladatan Yuqdisho Degrada Kaaraan, ahna Dhul warshadeed, Qaabkiisuna yahay Afar Gees Isleeg, Addirihiisuna yihiin: 250X250 kuna fadhiya no. 62500.

SOOHDIV IHIISUNAYIHIIN SIDA SOO SOCOTA:

WAQOOYI WAXAA KA XIGGA: DHUL DAD LEH.

KOONFUR " " W A D D O .

GALBEED " " W A D D O .

B A R I " " W A D D O . ~


Si lagu caddeyo qaabka iyo caddada dhulkaas waxaa lays xusuusinayaa in laga arkikaro naqshadda ku dhegan warqaddaan Isagoo jooga weydiistihii waxaa loo soo mudey 4tii gees ee dhulkaas, waxuuna caddeyey inuu raali yahay,

In kastoo siinta ay xeerar ku xerayso. Dawladda Soomaaliyeed waxba looma raacan karo illa iyo inta ay k bixinayso

"Amar Xeer" dhismo

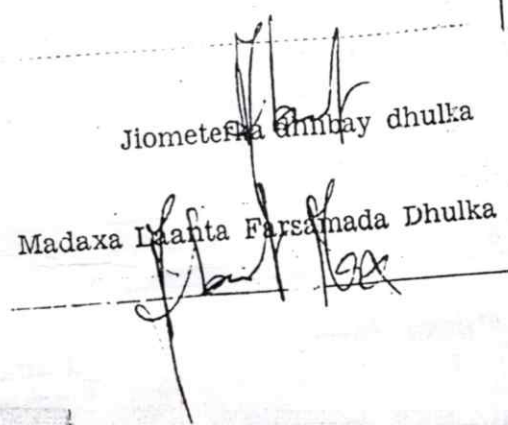
Xaashidaan siismada dhulka waxaa laga samey' vaa 3 nuqul oo la kala siinayo : Danayaha, Qaybta Dhulka iyo his-maha, Dawladda Hoose ee _____

Qofka la siiyey dhulka



Jiometeerka gumbay dhulka

Madaxa Daanta Farsamada Dhulka



Waxaan ugu horeyn dhulka ku yidhi, sidey caadadu ahaydna isa-
goo jooga gofki la siinayey dhulkaas waxaa la tusay geesihii
tasoo wafaqsan qorshaha magaalada :

waxayna u egtahay sida soo socota :

*Taa Gabel dhul oo ku yaal raqacaladatan luqdisho
Degrada Kaaran, ahna Dhul warshadeed, Qaabkiisuna
yahay Afar Gees Isleeg, Addirihiisuna yihiin: 250X250
kuna fadhiya n. 62500.*

SOCODI IHIISUNAYIHIN SIDA SOO SOCOTA:

- MAQOQYI WAXAA KA XIQA: DHUL DAD LEH.
- KOONFUR " W A D D O .
- GALEBED " W A D D O .
- B A R I " W A D D O . -

Si lagu caddeyo qaabka iyo caddada dhulkaas waxaa lays
xusuusinayaa in laga arkikaro naqshadda ku dhegan warqaddaan
Isagoo jooga weydiistihii waxaa loo soo muday 4tii gees ee dhu-
lkaas, waxuuna caddeyey inuu raali yahay.

In kastoo siinta ay xeerar ku xerayso. Dawladda Soomaali-
yeed waxba looma raacan karo illa iyo inta ay ka bixinayso
"Amar Xeer" dhismo

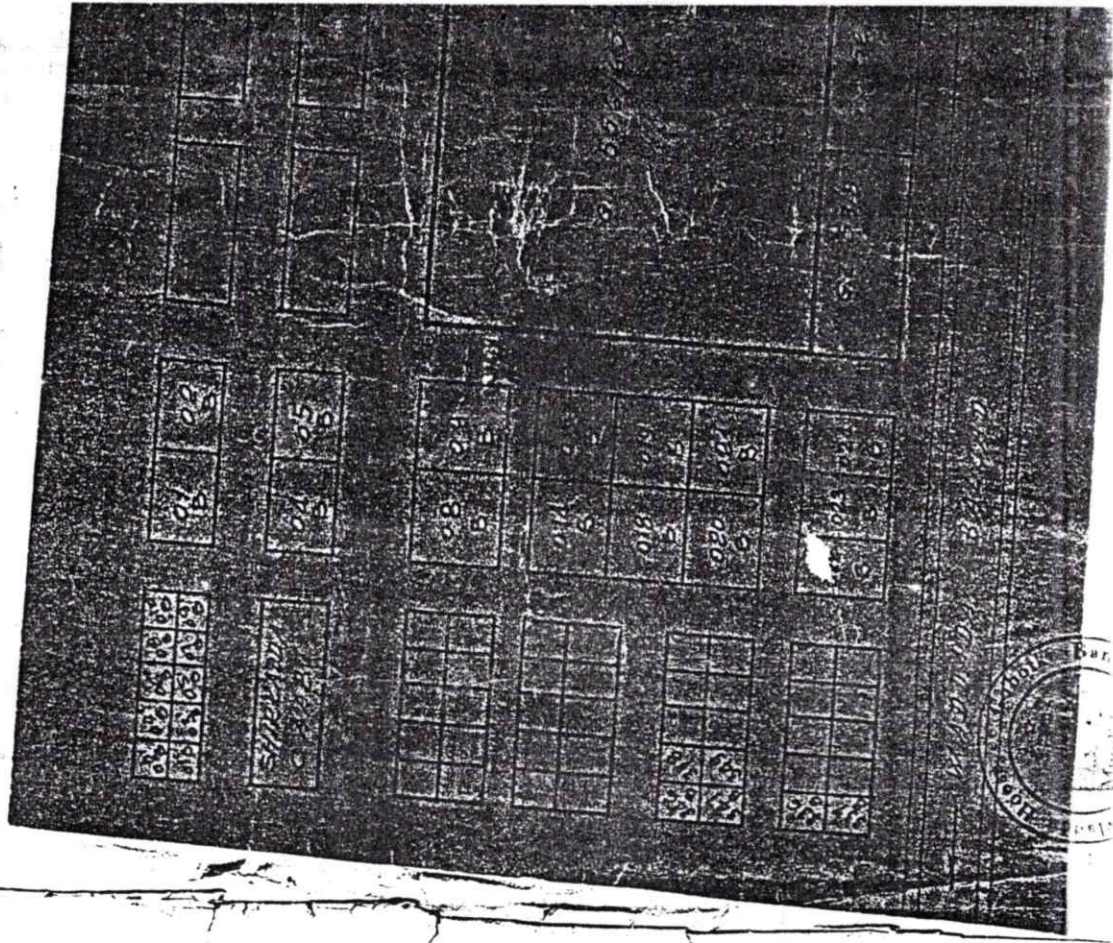
Xaashidaan siismada dhulka waxaa laga sameynayaa 3
nuqul oo la kala siinayo : Danayaha, Qaybta Dhulka iyo Dhis-
maha, Dawladda Hoose ee

Qo/ka la siiyey dhulka

Jiometeska timay dhulka

Madaxa Imaha Farsamada Dhulka

= PLANIMETRIA =



PROFORMA DISBURSEMENT ACCOUNT M/V SATELLITE

7.6.91

<u>PORT CHARGES</u>			
- Cargo Manifest Fees (In & Out)	US\$.	<u>405.-</u>	
- Anchorage Tax	"	<u>12.70</u>	
- Port charges/Social Amenities/Free Pratique	"	<u>129.75</u>	
- Car Hire	"	<u>-</u>	
- Customs Overtime	"	<u>150.-</u>	
- Forwarding & Clearing	"	<u>-</u>	
- Immigration Fees	"	<u>16.80</u>	
- Pilotage Service	"	<u>7.98</u>	
- Mooring/Unmooring Service	"	<u>68.-</u>	
- Towage Service	"	<u>338.-</u>	
- Berth Occupancy	"	<u>2929.80</u>	
- Wharfage Fees	"	<u>300.-</u>	
- General Service	"		<u>4,357.33</u>
<u>STEVEDORING & UNLOADING</u>			
- Storage of Inward cargo (Stevedoring)	"	<u>1123.-50</u>	
- " " Outward " (" Loading)	"	<u>-</u>	
- Port Services	"	<u>211.-</u>	
- Tally Clerk	"	<u>-</u>	
- Port Charges	"	<u>140.-</u>	<u>1474.-50</u>
<u>RESERVATIONS</u>			
- Water Service	"	<u>428.-60</u>	
- Health Inspection/Medical Expenses	"	<u>-</u>	
- Fuel Expenses (Master & Crew)	"	<u>-</u>	
- Petty/Local Postal/Stationery etc.	"	<u>-</u>	
- Crew Repatriation	"	<u>-</u>	
- Telegrams & Telex Charges	"	<u>-</u>	
- Hotel Expenses	"	<u>-</u>	
- Staff Overtime	"	<u>1211.-40</u>	
- Ship/Supplier Provisions	"	<u>-</u>	
- Cost to Unload	"	<u>-</u>	
- Sundry Expenses	"	<u>-</u>	
- Water supplied	"	<u>-</u>	
- Supervisor & Asst. Supervisor	"	<u>710.60</u>	
- Garbage & Cleasos	"	<u>261.20</u>	
- Laundry Expenses	"		<u>2611.-80</u>
<u>COMMISSIONS</u>			
- Agency Fees	"	<u>6841.-90</u>	
- Inward Freight Commission	"	<u>-</u>	
- Outward Freight Commission	"	<u>-</u>	
- Bank Commission	"		<u>6841.90</u>

215

59
B
C

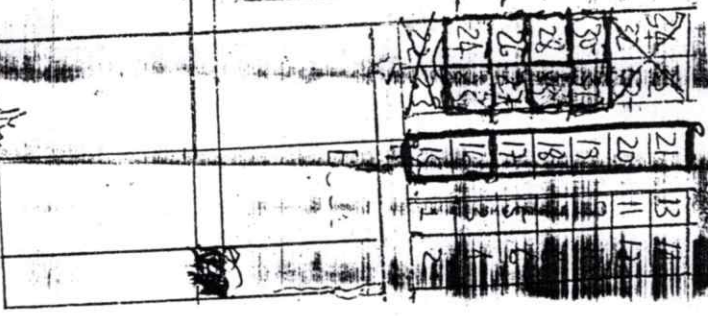
Grand Total US\$ 15,385.-50



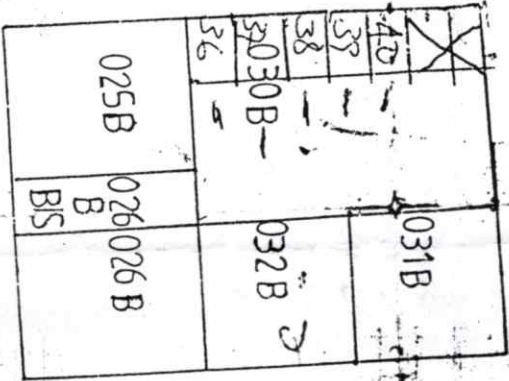
50
7-0

Isticmarkka

Xamar Balcaid



SUGA
XOOLAHA



GAWANKA
GOOW RACA

WADDADA XAMAR BALCAID



[Handwritten signature]